

Commemorative head of a defeated leader

Edo peoples, Benin Kingdom, Nigeria, late 16th century
Copper alloy, iron

Overall: 50.8 x 17.8 cm (20 x 7 in.)

Loaned by Robert Owen Lehman

Provenance:

Between 1800 and 1884, given by Amapetu (King) of Mahin to Eugen Fischer, Germany; by descent to his grandchildren, Bernd and Maria Fischer; December 7, 1971, Fischer and others sale, Sotheby's, London, lot 125, sold for £29,000 to Griffiths (possibly Mr. and Mrs. Sanford Griffith, New York). 2012, Robert Owen Lehman, New York.

Commemorative head of a king (Oba)

Edo peoples, Benin Kingdom, Nigeria, 16th century
Copper alloy, iron

Overall: 26.7 x 20.3 cm (10 1/2 x 8 in.)

Loaned by Robert Owen Lehman

Provenance:

By 1932, Armand Rateau, Paris; until 1970, by descent within the family; July 7, 1970, Rateau and others sale, Christie's, London, lot 70, to Pierre Bovis (dealer), Santa Fe, NM. 2012, Robert Owen Lehman, New York.

Commemorative head of a defeated neighboring leader

Edo peoples, Benin kingdom, Nigeria, late 15th–early 16th century
Copper alloy, iron

Length x width: 21 x 15.2 cm (8 1/4 x 6 in.)

Robert Owen Lehman Collection

Provenance:

1897, removed from the Benin Royal Palace during the Punitive Expedition by Captain Guy Burrows; May 2, 1898, sold by Norman Burrows, Mellor Hall, Derbyshire, for £18 to Lt.-General Augustus Henry Pitt-Rivers (b. 1827 - d. 1900), Farnham, England; until the 1960s, kept at the Pitt-Rivers Museum, Farnham, and passed by descent within the family [see note]; 1970s, sold upon the dispersal of the collection. 2012, promised gift of Robert Owen Lehman to the MFA.

NOTE:

The collection of the privately-owned Pitt-Rivers museum passed by descent through Augustus Henry Pitt-Rivers's son Alexander Lane Fox Pitt-Rivers to his grandson, Captain George Pitt-Rivers (1890-1966) and his common law wife, Stella Howson-Clive (Pitt-Rivers). The museum closed in the 1960s and the collection was sold.



Relief plaque showing a battle scene

Edo peoples, Benin kingdom, Nigeria, 16th–17th century
Copper alloy

Length x width: 47 x 40 cm (18 1/2 x 15 3/4 in.)

Robert Owen Lehman Collection

Provenance:

1897, removed from the Benin Royal Palace during the Punitive Expedition by Captain Guy Burrows; May 19, 1898, sold by Norman Burrows, Mellor Hall, Derbyshire for £ 32 to Lt.-General Augustus Henry Pitt-Rivers (b. 1827 - d. 1900), Farnham, England; until the 1960s, kept at the Pitt-Rivers Museum, Farnham, and passed by descent within the family [see note]; 1970s, sold upon the dispersal of the collection. 2012, promised gift of Robert Owen Lehman to the MFA.

NOTE:

The collection of the privately-owned Pitt-Rivers museum passed by descent through Augustus Henry Pitt-Rivers's son Alexander Lane Fox Pitt-Rivers to his grandson, Captain George Pitt-Rivers (1890-1966) and his common law wife, Stella Howson-Clive (Pitt-Rivers). The museum closed in the 1960s and the collection was sold.



Mounted ruler (so-called horseman)

Edo peoples, Benin kingdom, Nigeria, 16th century

Copper alloy

Length x width: 45.7 x 27.9 cm (18 x 11 in.)

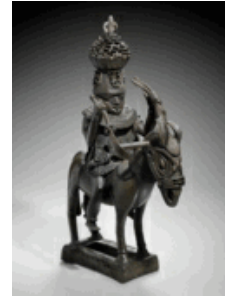
Robert Owen Lehman Collection

Provenance:

1897, removed from the Benin Royal Palace during the Punitive Expedition by Dr. Felix Norman Ling Roth (b. 1857 – d. 1921); 1897, given by Roth to his brother, Henry Ling Roth (b. 1855 – d. 1925), Halifax, England; May 11, 1898, sold by Henry Ling Roth for £ 20 to Lt.-General Augustus Henry Pitt-Rivers (b. 1827 - d. 1900), Farnham, England; until the 1960s, kept at the Pitt-Rivers Museum, Farnham, and passed by descent within the family [see note]; 1970s, sold upon the dispersal of the collection. 2012, promised gift of Robert Owen Lehman to the MFA.

NOTE:

The collection of the privately-owned Pitt-Rivers museum passed by descent through Augustus Henry Pitt-Rivers's son Alexander Lane Fox Pitt-Rivers to his grandson, Captain George Pitt-Rivers (1890-1966) and his common law wife, Stella Howson-Clive (Pitt-Rivers). The museum closed in the 1960s and the collection was sold.



Royal double gong

Edo peoples, Benin kingdom, Nigeria, 17th century

Copper alloy

Length x width: 28.6 x 10.8 cm (11 1/4 x 4 1/4 in.)

Robert Owen Lehman Collection

Provenance:

1897, removed from the Benin Royal Palace during the Punitive Expedition by Dr. Felix Norman Ling Roth (b. 1857 – d. 1921); 1897, given by Roth to his brother, Henry Ling Roth (b. 1855 – d. 1925), Halifax, England; May 11, 1898, sold by Henry Ling Roth for £ 20 to Lt.-General Augustus Henry Pitt-Rivers (b. 1827 - d. 1900), Farnham, England; until the 1960s, kept at the Pitt-Rivers Museum, Farnham, and passed by descent within the family [see note]; 1970s, sold upon the dispersal of the collection. 2012, promised gift of Robert Owen Lehman to the MFA.

NOTE:

The collection of the privately-owned Pitt-Rivers museum passed by descent through Augustus Henry Pitt-Rivers's son Alexander Lane Fox Pitt-Rivers to his grandson, Captain George Pitt-Rivers (1890-1966) and his common law wife, Stella Howson-Clive (Pitt-Rivers). The museum closed in the 1960s and the collection was sold.



Pectoral with two officials

Edo peoples, Benin kingdom, Nigeria, 16th–17th century

Copper alloy

Length x width: 31.1 x 28.6 cm (12 1/4 x 11 1/4 in.)

Robert Owen Lehman Collection

Provenance:

1897, Eva Cutter (dealer), London; August 12, 1897, sold by Miss Cutter for £ 15 to Lt. General Lt.-General Augustus Henry Pitt-Rivers (b. 1827 - d. 1900), Farnham, England; until the 1960s, kept at the Pitt-Rivers Museum, Farnham, and passed by descent within the family [see note]; 1970s, sold upon the dispersal of the collection. 2012, promised gift of Robert Owen Lehman to the MFA.

NOTE:

The collection of the privately-owned Pitt-Rivers museum passed by descent through Augustus Henry Pitt-Rivers's son Alexander Lane Fox Pitt-Rivers to his grandson, Captain George Pitt-Rivers (1890-1966) and his common law wife, Stella Howson-Clive (Pitt-Rivers). The museum closed in the 1960s and the collection was sold.



Relief plaque showing a painted youth

Edo peoples, Benin kingdom, Nigeria, late 16th–17th century

Copper alloy

Height x width: 16 1/2 x 7 1/2 in. (41.9 x 19.1 cm)

Robert Owen Lehman Collection

Provenance:

March 24, 1898, acquired from the Crown Agent of the Niger Coast Protectorate, London, for £ 5 by Lt.-General Augustus Henry Pitt-Rivers (b. 1827 - d. 1900), Farnham, England; until the 1960s, kept at the Pitt-Rivers Museum, Farnham, and passed by descent within the family [see note]; 1970s, sold upon the dispersal of the collection. 2012, promised gift of Robert Owen Lehman to the MFA.

NOTE:

The collection of the privately-owned Pitt-Rivers museum passed by descent through Augustus Henry Pitt-Rivers's son Alexander Lane Fox Pitt-Rivers to his grandson, Captain George Pitt-Rivers (1890-1966) and his common law wife, Stella Howson-Clive (Pitt-Rivers). The museum closed in the 1960s and the collection was sold.



Relief plaque showing a warrior

Edo peoples, Benin kingdom, Nigeria, 16th–17th century

Copper alloy

Height x width: 16 x 6 3/4 in. (40.6 x 17.1 cm)

Robert Owen Lehman Collection

Provenance:

March 24, 1898, acquired from the Crown Agent of the Niger Coast Protectorate, London, for £ 5 by Lt.-General Augustus Henry Pitt-Rivers (b. 1827 - d. 1900), Farnham, England; until the 1960s, kept at the Pitt-Rivers Museum, Farnham, and passed by descent within the family [see note]; 1970s, sold upon the dispersal of the collection. 2012, promised gift of Robert Owen Lehman to the MFA.

NOTE:

The collection of the privately-owned Pitt-Rivers museum passed by descent through Augustus Henry Pitt-Rivers's son Alexander Lane Fox Pitt-Rivers to his grandson, Captain George Pitt-Rivers (1890-1966) and his common law wife, Stella Howson-Clive (Pitt-Rivers). The museum closed in the 1960s and the collection was sold.



Relief plaque showing a junior court official

Edo peoples, Benin kingdom, Nigeria, 16th–17th century

Copper alloy

Length x width: 46.4 x 33 cm (18 1/4 x 13 in.)

Robert Owen Lehman Collection

Provenance:

March 24, 1898, acquired from the Crown Agent of the Niger Coast Protectorate, London, for £ 6 by Lt.-General Augustus Henry Pitt-Rivers (b. 1827 - d. 1900), Farnham, England; until the 1960s, kept at the Pitt-Rivers Museum, Farnham, and passed by descent within the family [see note]; 1970s, sold upon the dispersal of the collection. 2012, promised gift of Robert Owen Lehman to the MFA.

NOTE:

The collection of the privately-owned Pitt-Rivers museum passed by descent through Augustus Henry Pitt-Rivers's son Alexander Lane Fox Pitt-Rivers to his grandson, Captain George Pitt-Rivers (1890-1966) and his common law wife, Stella Howson-Clive (Pitt-Rivers). The museum closed in the 1960s and the collection was sold.



Relief plaque showing two officials with raised swords

Edo peoples, Benin kingdom, Nigeria, 16th–17th century

Copper alloy

Length x width: 43.2 x 31.8 cm (17 x 12 1/2 in.)

Robert Owen Lehman Collection

Provenance:

March 24, 1898, acquired from the Crown Agent of the Niger Coast Protectorate, London, for £ 7 by Lt.-General Augustus Henry Pitt-Rivers (b. 1827 - d. 1900), Farnham, England; until the 1960s, kept at the Pitt-Rivers Museum, Farnham, and passed by descent within the family [see note]; 1970s, sold upon the dispersal of the collection. 2012, promised gift of Robert Owen Lehman to the MFA.

NOTE:

The collection of the privately-owned Pitt-Rivers museum passed by descent through Augustus Henry Pitt-Rivers's son Alexander Lane Fox Pitt-Rivers to his grandson, Captain George Pitt-Rivers (1890-1966) and his common law wife, Stella Howson-Clive (Pitt-Rivers). The museum closed in the 1960s and the collection was sold.



Relief plaque showing three officials

Edo peoples, Benin kingdom, Nigeria, 16th–17th century

Copper alloy

Length x width: 48.3 x 38.1 cm (19 x 15 in.)

Robert Owen Lehman Collection

Provenance:

March 7, 1898, sale, J. C. Stevens Auction Rooms, London, lot 225, sold for £ 17.17 to Lt.-General Augustus Henry Pitt-Rivers (b. 1827 - d. 1900), Farnham, England; until the 1960s, kept at the Pitt-Rivers Museum, Farnham, and passed by descent within the family [see note]; 1970s, sold upon the dispersal of the collection. 2012, promised gift of Robert Owen Lehman to the MFA.

NOTE:

The collection of the privately-owned Pitt-Rivers museum passed by descent through Augustus Henry Pitt-Rivers's son Alexander Lane Fox Pitt-Rivers to his grandson, Captain George Pitt-Rivers (1890-1966) and his common law wife, Stella Howson-Clive (Pitt-Rivers). The museum closed in the 1960s and the collection was sold.



Staff showing a military commander on horseback
Edo peoples, Benin kingdom, Nigeria, 18th century
Ivory
Height x width: 16 x 4 in. (40.6 x 10.2 cm)
Robert Owen Lehman Collection

Provenance:

April 4, 1898, sale, J. C. Stevens Auction Rooms, London, lot 155, sold for £ 25.70 to Lt.-General Augustus Henry Pitt-Rivers (b. 1827 - d. 1900), Farnham, England; until the 1960s, kept at the Pitt-Rivers Museum, Farnham, and passed by descent within the family [see note]; 1970s, sold upon the dispersal of the collection. 2012, promised gift of Robert Owen Lehman to the MFA.

NOTE:

The collection of the privately-owned Pitt-Rivers museum passed by descent through Augustus Henry Pitt-Rivers's son Alexander Lane Fox Pitt-Rivers to his grandson, Captain George Pitt-Rivers (1890-1966) and his common law wife, Stella Howson-Clive (Pitt-Rivers). The museum closed in the 1960s and the collection was sold.



Relief plaque showing a dignitary with drum and two attendants striking gongs
Edo peoples, Benin kingdom, Nigeria, 16th–17th century
Copper alloy
Length x width: 43.2 x 27.9 cm (17 x 11 in.)
Robert Owen Lehman Collection

Provenance:

1898, William Downing Webster (dealer; b. 1863 – d. 1913), London and Bicester, Oxfordshire, England; October 15, 1898, sold by W.D. Webster for £ 19 to Lt.-General Augustus Henry Pitt-Rivers (b. 1827 - d. 1900), Farnham, England; until the 1960s, kept at the Pitt-Rivers Museum, Farnham, and passed by descent within the family [see note]; 1970s, sold upon the dispersal of the collection. 2012, promised gift of Robert Owen Lehman to the MFA.

NOTE:

The collection of the privately-owned Pitt-Rivers museum passed by descent through Augustus Henry Pitt-Rivers's son Alexander Lane Fox Pitt-Rivers to his grandson, Captain George Pitt-Rivers (1890-1966) and his common law wife, Stella Howson-Clive (Pitt-Rivers). The museum closed in the 1960s and the collection was sold.



Relief plaque showing a king (Oba) or official with a staff of proclamation
Edo peoples, Benin kingdom, Nigeria, 16th–17th century
Copper alloy
Length x width: 26.7 x 17.8 cm (10 1/2 x 7 in.)
Robert Owen Lehman Collection

Provenance:

1899, William Downing Webster (dealer; b. 1863 – d. 1913), London and Bicester, Oxfordshire, England; January 23, 1899, sold by W. D. Webster for £ 4.10 to Lt.-General Augustus Henry Pitt-Rivers (b. 1827 - d. 1900), Farnham, England; until the 1960s, kept at the Pitt-Rivers Museum, Farnham, and passed by descent within the family [see note]; 1970s, sold upon the dispersal of the collection. 2012, promised gift of Robert Owen Lehman to the MFA.

NOTE:

The collection of the privately-owned Pitt-Rivers museum passed by descent through Augustus Henry Pitt-Rivers's son Alexander Lane Fox Pitt-Rivers to his grandson, Captain George Pitt-Rivers (1890-1966) and his common law wife, Stella Howson-Clive (Pitt-Rivers). The museum closed in the 1960s and the collection was sold.



Pendant of a Portuguese horseman
Edo peoples, Benin kingdom, Nigeria, 16th century
Copper alloy
Length x width: 12.7 x 12.7 cm (5 x 5 in.)
Robert Owen Lehman Collection

Provenance:

1897, removed from the Benin Royal Palace during the Punitive Expedition by Dr. J.P. Howe; by descent within his family to Captain J.S. Howe, R.E. and then to Mrs. R.M. de Pury; June 20, 1961, Mrs. R. M. de Pury and others sale, Sotheby's, London, lot 138. 2012, promised gift of Robert Owen Lehman to the MFA.



Relief plaque showing a war chief and two attendants
Edo peoples, Benin kingdom, Nigeria, 16th–17th century
Copper alloy
Length x width: 48.3 x 40 cm (19 x 15 3/4 in.)
Robert Owen Lehman Collection

Provenance:

1897, removed from the Benin Royal Palace during the Punitive Expedition and passed by descent to Paul Rose, England; May 20, 1964, Rose and others sale, Sotheby's, London, lot 113, to Robert Owen Lehman; 2012, promised gift of Robert Owen Lehman to the MFA.



Relief plaque showing a crocodile with mudfish
Edo peoples, Benin kingdom, Nigeria, 16th–17th century
Copper alloy
Height x width: 19 1/4 x 7 1/2 in. (48.9 x 19.1 cm)
Robert Owen Lehman Collection

Provenance:

1898 until 1972, British Museum, London (accession no. 98.1-15.180); 1972, acquired from the British Museum by Robert Owen Lehman; 2012, promised gift of Robert Owen Lehman to the MFA.



Relief plaque showing a mudfish
Edo peoples, Benin kingdom, Nigeria, 16th–17th century
Copper alloy
Length x width: 40.6 x 16.5 cm (16 x 6 1/2 in.)
Robert Owen Lehman Collection

Provenance:

1898 until 1972, British Museum, London (No. 98.1-15.187); 1972, acquired from the British Museum by Robert Owen Lehman; 2012, promised gift of Robert Owen Lehman to the MFA.



Pendant with a Queen Mother (Iyoba) playing a gong
Edo peoples, Benin kingdom, Nigeria, late 17th–early 18th century
Ivory
Length x width: 17.1 x 10.2 cm (6 3/4 x 4 in.)
Robert Owen Lehman Collection

Provenance:

Early 20th century, brought from the Kingdom of Benin to England. 1961, Colonel Albert Horton, England; February 6, 1961, Colonel Horton sale, Sotheby's, London, lot 152, sold for £ 880 to K. John Hewett (b. 1919 – d. 1994), London. 2012, promised gift of Robert Owen Lehman to the MFA.



Hip ornament showing a leopard
Edo peoples, Benin kingdom, Nigeria, 17th century
Ivory
Height x length: 10.2 x 26.7 cm (4 x 10 1/2 in.)
Robert Owen Lehman Collection

Provenance:

By 1959, Jay C. Leff (d. 2000), Uniontown, PA; April 22, 1967, Leff sale, Parke-Bernet, New York, lot 77, sold for \$2400. 2012, promised gift of Robert Owen Lehman to the MFA.



Commemorative head of a defeated neighboring leader

Edo peoples, Benin Kingdom, Nigeria, late 15th–early 16th century

Copper alloy, iron

Length x width: 20.3 x 15.9 cm (8 x 6 1/4 in.)

Robert Owen Lehman Collection

Provenance:

By 1964 until at least 1970, Jay C. Leff (d. 2000), Uniontown, PA. 2012, gift of Robert Owen Lehman to the MFA.
(Accession Date: April 25, 2012)



Pendant with showing an Oba (King) and two dignitaries

Edo peoples, Benin kingdom, Nigeria, 17th–early 18th century

Gilded copper alloy

Length x width: 19.7 x 13.3 cm (7 3/4 x 5 1/4 in.)

Robert Owen Lehman Collection

Provenance:

By 1964, Jay C. Leff (d. 2000), Uniontown, PA. By 1984, Mathias Komor (dealer; d. 1984), New York; sold by Komor to Robert Owen Lehman; 2012, promised gift of Robert Owen Lehman to the MFA.



Small pendant

Edo peoples, Benin kingdom, Nigeria, 16th–17th century

Copper alloy

Length x width: 6.4 x 2.5 cm (2 1/2 x 1 in.)

Robert Owen Lehman Collection

Provenance:

By 1960, John Russell, London; July 11, 1972, Russell and others sale, Sotheby's, London, lot 269, to James Kirkman for £ 2,000. 2012, promised gift of Robert Owen Lehman to the MFA.



Portuguese soldier

Edo peoples, Benin kingdom, Nigeria, 16th century

Copper alloy, iron

Height x width: 16 x 9 in. (40.6 x 22.9 cm)

Robert Owen Lehman Collection

Provenance:

By 1960, Julius Carlebach (b. 1909 – d. 1964), New York. 2012, promised gift of Robert Owen Lehman to the MFA.



Relief plaque showing a war chief with two attendants

Edo peoples, Benin kingdom, Nigeria, 16th–17th century

Copper alloy

Length x width: 40.6 x 36.8 cm (16 x 14 1/2 in.)

Robert Owen Lehman Collection

Provenance:

June 25, 1968, anonymous sale, Sotheby's, London, lot 155, to Charles Rattou (b. 1895 – d. 1986) for £11,000. 2012, promised gift of Robert Owen Lehman to the MFA.



Commemorative head of a king (Oba)

Edo peoples, Benin kingdom, Nigeria, late 16th century

Copper alloy, iron

Height x width: 9 1/2 x 6 1/2 in. (24.1 x 16.5 cm)

Robert Owen Lehman Collection

Provenance:

1968, L. Hope, England; December 3, 1968, Hope and others sale, Christie's, London, lot 76, to Alexander Martin for £ 20,000. 2012, promised gift of Robert Owen Lehman to the MFA.



Relief plaque showing a Portuguese

Edo peoples, Benin kingdom, Nigeria, 16th–17th century

Copper alloy

Length x width: 45.7 x 33 cm (18 x 13 in.)

Robert Owen Lehman Collection

Provenance:

By 1973, Commander H.H. Ridler, England; March 26, 1973, Ridler and others sale, Sotheby's, London, lot 190 to James Kirkman for £3400. 2012, promised gift of Robert Owen Lehman to the MFA.



Pendant showing an Oba (King) and two dignitaries

Edo peoples, Benin kingdom, Nigeria, 18th–19th century

Copper alloy

Length x width: 18.4 x 13.3 cm (7 1/4 x 5 1/4 in.)

Robert Owen Lehman Collection

Provenance:

By 1984, Mathias Komor (dealer; d. 1984), New York; sold by Komor to Robert Owen Lehman; 2012, promised gift of Robert Owen Lehman to the MFA.



Hip ornament showing a ram

Edo peoples, Benin kingdom, Nigeria, 18th century

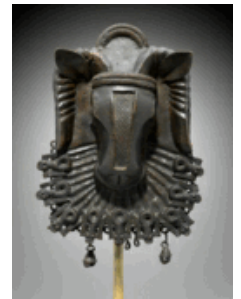
Copper alloy

Length x width: 20.3 x 13.3 cm (8 x 5 1/4 in.)

Robert Owen Lehman Collection

Provenance:

By 1984, Mathias Komor (dealer; d. 1984), New York; sold by Komor to Robert Owen Lehman; 2012, promised gift of Robert Owen Lehman to the MFA.



Staff showing a bird of prophesy

Edo peoples, Benin kingdom, Nigeria, 19th century

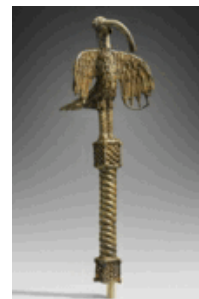
Copper alloy

Length x width: 32.4 x 12.1 cm (12 3/4 x 4 3/4 in.)

Robert Owen Lehman Collection

Provenance:

By 1984, Mathias Komor (dealer; d. 1984), New York; sold by Komor to Robert Owen Lehman; 2012, promised gift of Robert Owen Lehman to the MFA.



Relief plaque showing a king (Oba) dominating leopards
Edo peoples, Benin kingdom, Nigeria, 16th–17th century
Copper alloy
Length x width: 37.5 x 19.1 cm (14 3/4 x 7 1/2 in.)
Robert Owen Lehman Collection

Provenance:

J.J. Klejman (dealer; b. 1906 – d. 1995), New York; sold by Klejman to Robert Owen Lehman; 2012, promised gift of Robert Owen Lehman to the MFA.



Relief plaque showing two warriors
Edo peoples, Benin kingdom, Nigeria, 16th–17th century
Copper alloy
Length x width: 47 x 30.5 cm (18 1/2 x 12 in.)
Robert Owen Lehman Collection

Provenance:

J.J. Klejman (dealer; b. 1906 – d. 1995), New York; sold by Klejman to Robert Owen Lehman; 2012, promised gift of Robert Owen Lehman to the MFA.



Container
Edo peoples, Benin kingdom, Nigeria, 19th century
Ivory
Length x width: 11.4 x 6.4 cm (4 1/2 x 2 1/2 in.)
Robert Owen Lehman Collection

Provenance:

Merton D. Simpson Gallery, New York; sold by Simpson to Robert Owen Lehman; 2012, promised gift of Robert Owen Lehman to the MFA.



Saltcellar
Sapi peoples, Sierra Leone and Guinea, late 15th–early 16th century
Ivory
Height x width: 6 x 3 3/4 in. (15.2 x 9.5 cm)
Robert Owen Lehman Collection

Provenance:

With Charles Ratton (b. 1895 – d. 1986), Paris. J.J. Klejman (b. 1906 – d. 1995), New York. 2012, promised gift of Robert Owen Lehman to the MFA.



Saltcellar
Sapi peoples, Sierra Leone and Guinea, late 15th–early 16th century
Ivory
Height x width: 10 x 4 in. (25.4 x 10.2 cm)
Robert Owen Lehman Collection

Provenance:

July 8, 1974, anonymous (“various properties”) sale, Sotheby’s, London, lot 84, sold for £6000 to Robinson. 2012, promised gift of Robert Owen Lehman to the MFA.

